

Proposed Exploration Programs Mount Anderson Property

Optionee: Apex Resources Inc.



Red Ridge, looking SW

Carl Schulze, B.Sc., P.Geo.

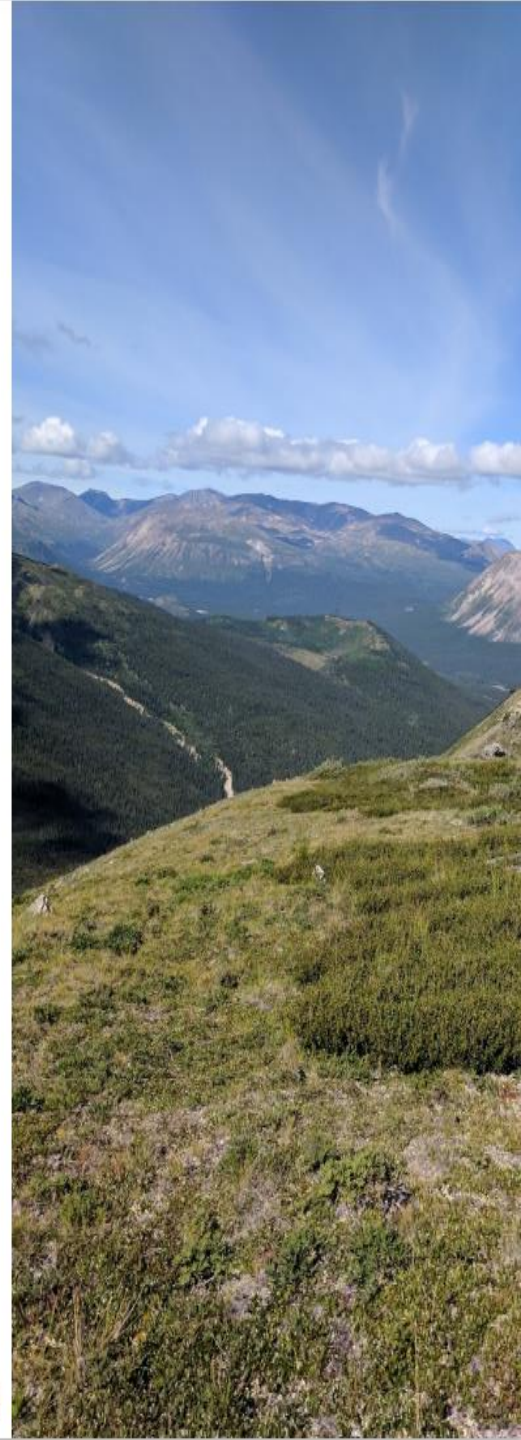
AURORA GEOSCIENCES LTD

Introduction

- **Project Manager:** Carl Schulze, Aurora Geosciences Ltd.
- **Operator:** Apex Resources Inc, a publicly traded junior mining company. Symbol: TSXV-APX
- **Status:** YESAB has provided recommendations to proceed, with conditions, for Mt. Anderson Project
- YESAB recommendations pending for Red Ridge property
- However, YESAB requested further information on creek crossings along access trail, and requires an alternate staging site
- YESAB demands detailed programs for each of 5 years covered in permit application; programs described are maximum amount of expected exploration

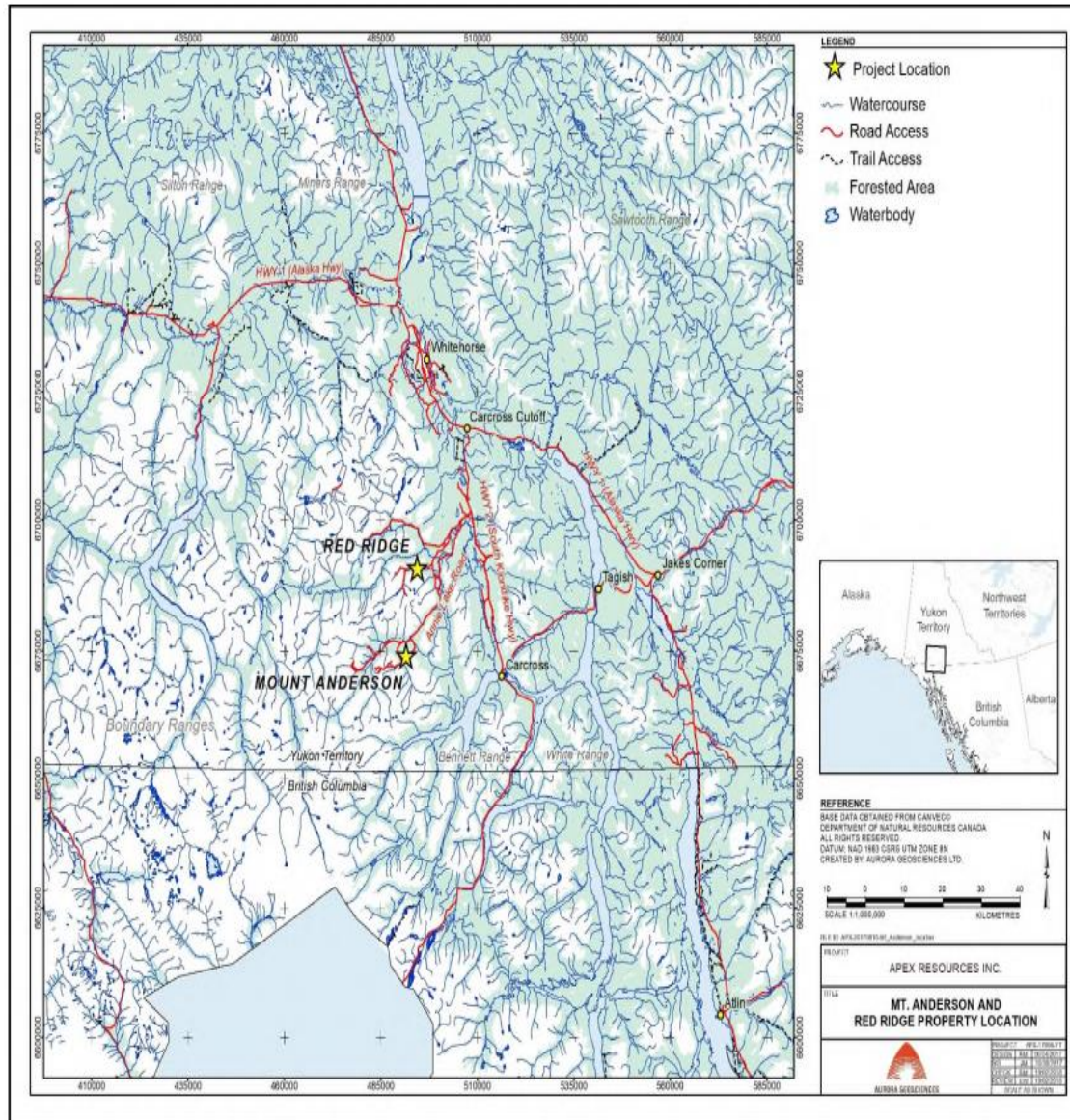


Mount Anderson, looking West



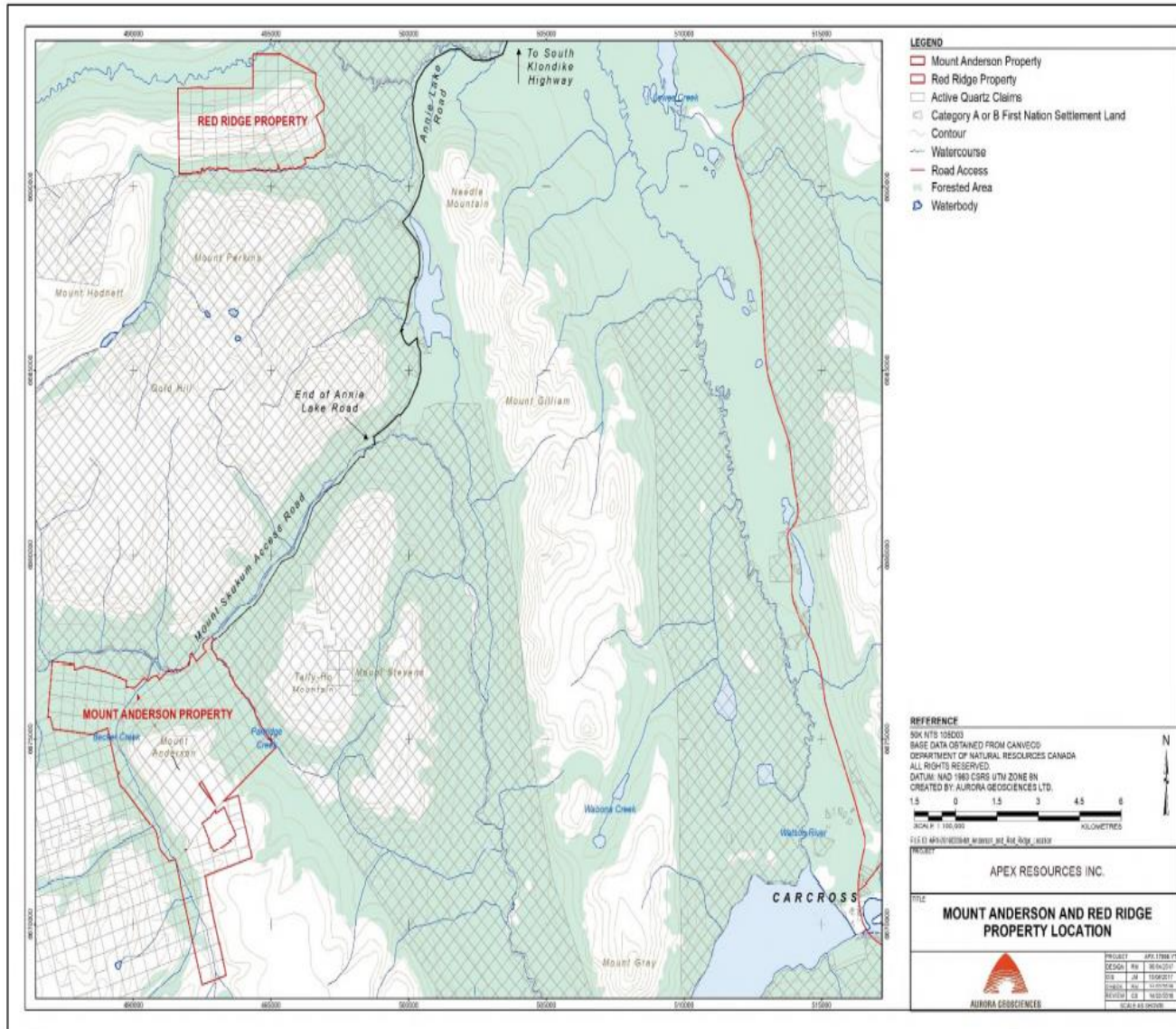
Locations

- **Red Ridge:** Roughly 8 trail-km NW of Annie Lake Road
- **Mount Anderson:** Extends south and west from Mt. Skukum Road; access trail is 7.5 km SW of Wheaton River bridge
- Both comprise Yukon quartz mining claims on Crown Land



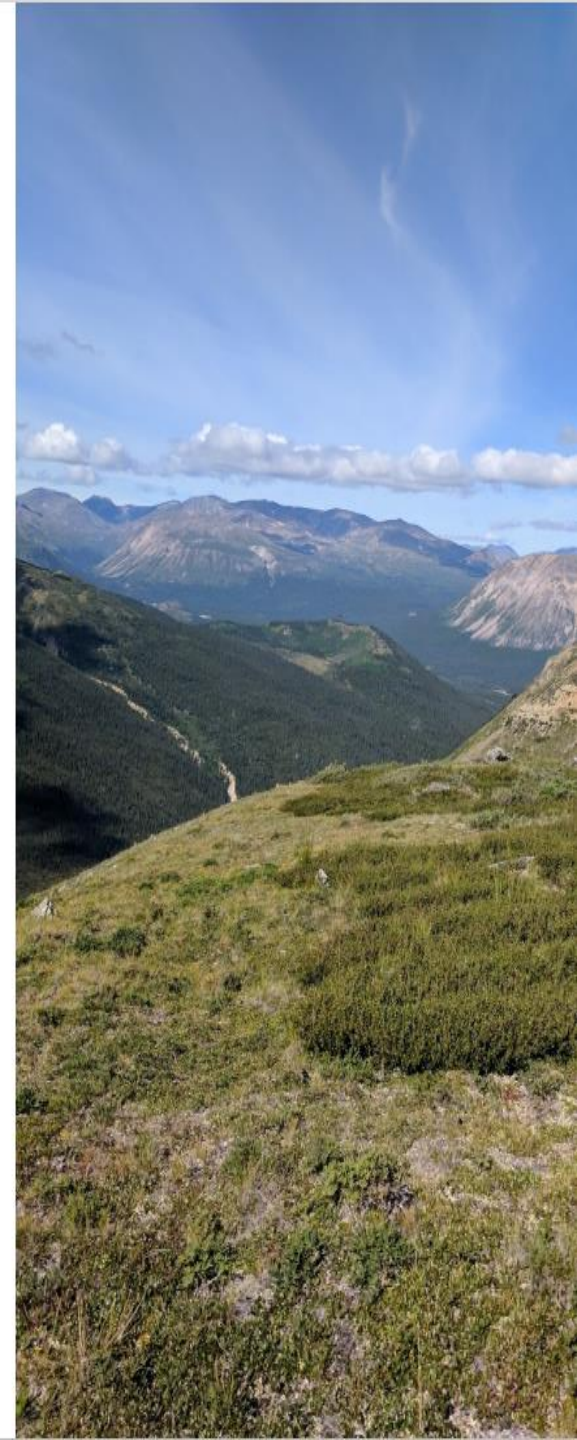
Locations

- Larger-scale map showing claim blocks



History: Mount Anderson

- **Pre-1900:** First explored in late 19th Century following discovery of gold in Mt. Skukum area
- **1909 – 1918:** Four adits excavated, small mill built, and bulk sample taken at “47-Zone”, production unknown
- **1944 – 1967:** Various exploration programs, including bulk sampling program
- **1968:** Adanac Mining and Exploration Ltd. discovered “Adanac Zone” east of “47-Zone”
- **1979 – 1986:** Various exploration programs
- **1986 – 1992:** Adda Minerals Co. discovered “Ridge Zone” northwest of 47-Zone in 1986, sampled “Rob Zone” in 1992
- **2006 – 2011:** Present property staked by Yukon-based prospectors
- **2011:** Comprehensive surface exploration program completed by Gold World Resources
- **2017:** Apex Resources optioned property. Short exploration program by Aurora Geosciences in August



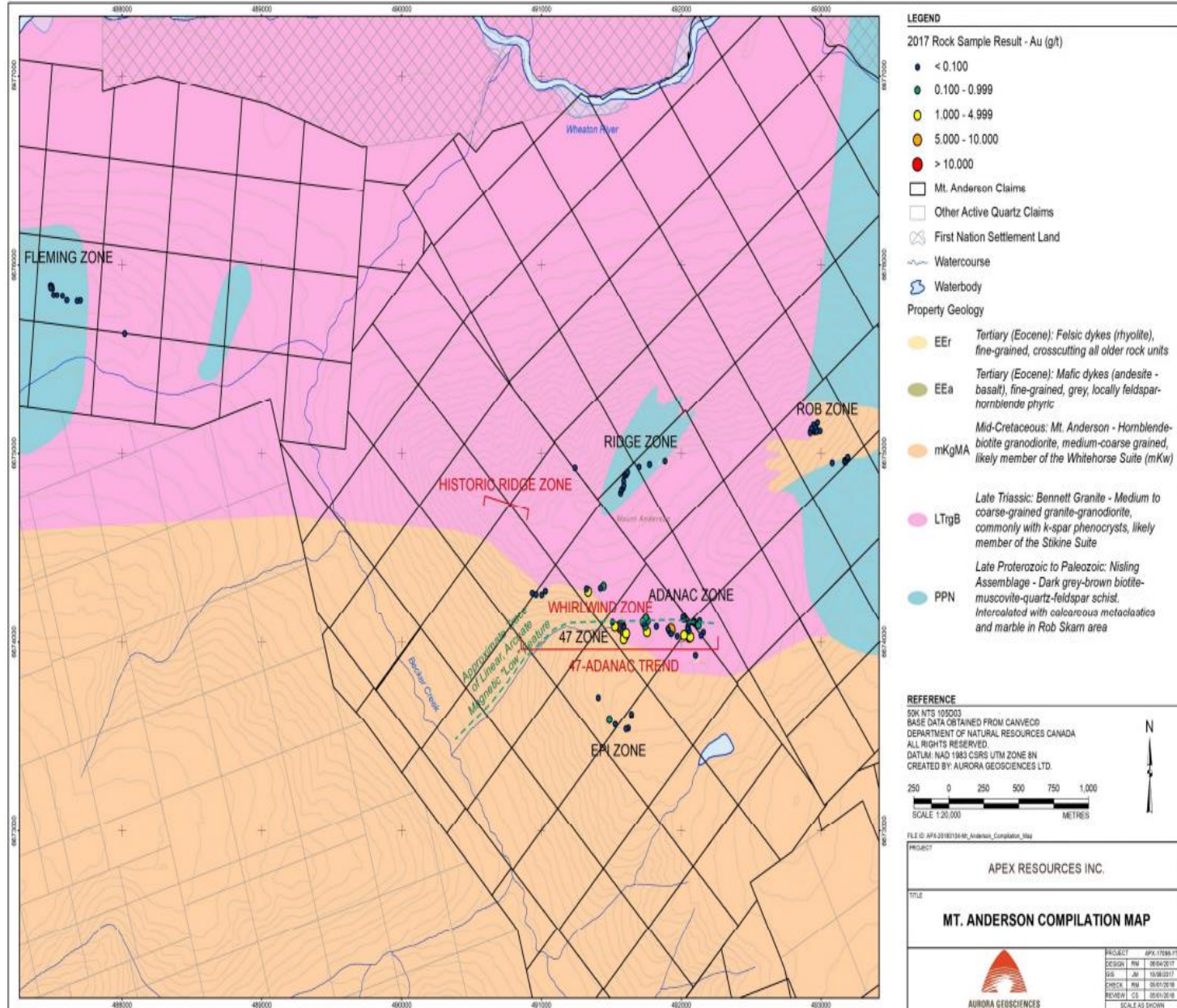
Mineralization Known to Date

- **47 Zone:** First zone discovered, high-grade base and precious-metal veins
- **Adanac Zone:** Located about 500 m east of the 47-Zone: High-grade gold-silver-base metal veins
- **47-Adanac Trend:** Interpreted as continuous mineralized trend extending west from Adanac Zone to undetermined point west of 47-Zone
- **Ridge Zone:** Localized high-grade gold-bearing boulders
- **Rob Skarn:** Mineralized prospect in eastern area; some high grade gold and base metal values from rock sampling
- **Fleming Zone:** “Skarn-style” occurrences; moderately elevated base metal and silver values



Gold-silver bearing quartz-galena vein, 47 Zone

Compilation Map, 2017 Program, Apex Resources Inc.



Proposed Exploration for 2018 and Beyond

Two phases planned for 2018

Phase 1: Surface programs of geological mapping, rock and soil geochemical sampling, “Induced Polarization” geophysical surveying

Possible airborne geophysical magnetic and electromagnetic surveying, “LIDAR” topographic surveying

Limited trenching and trail refurbishment

Phase 2: Diamond Drilling: 1,400 m in 9 holes, targeting mainly the 47-Adanac Trend and Ridge Zone

Exploration 2019 – 2022: gradual increase in annual drilling amount, to 2,000 m in 12 holes for 2022

Total amount over 5 years applied for: 8,450 m in 55 holes.

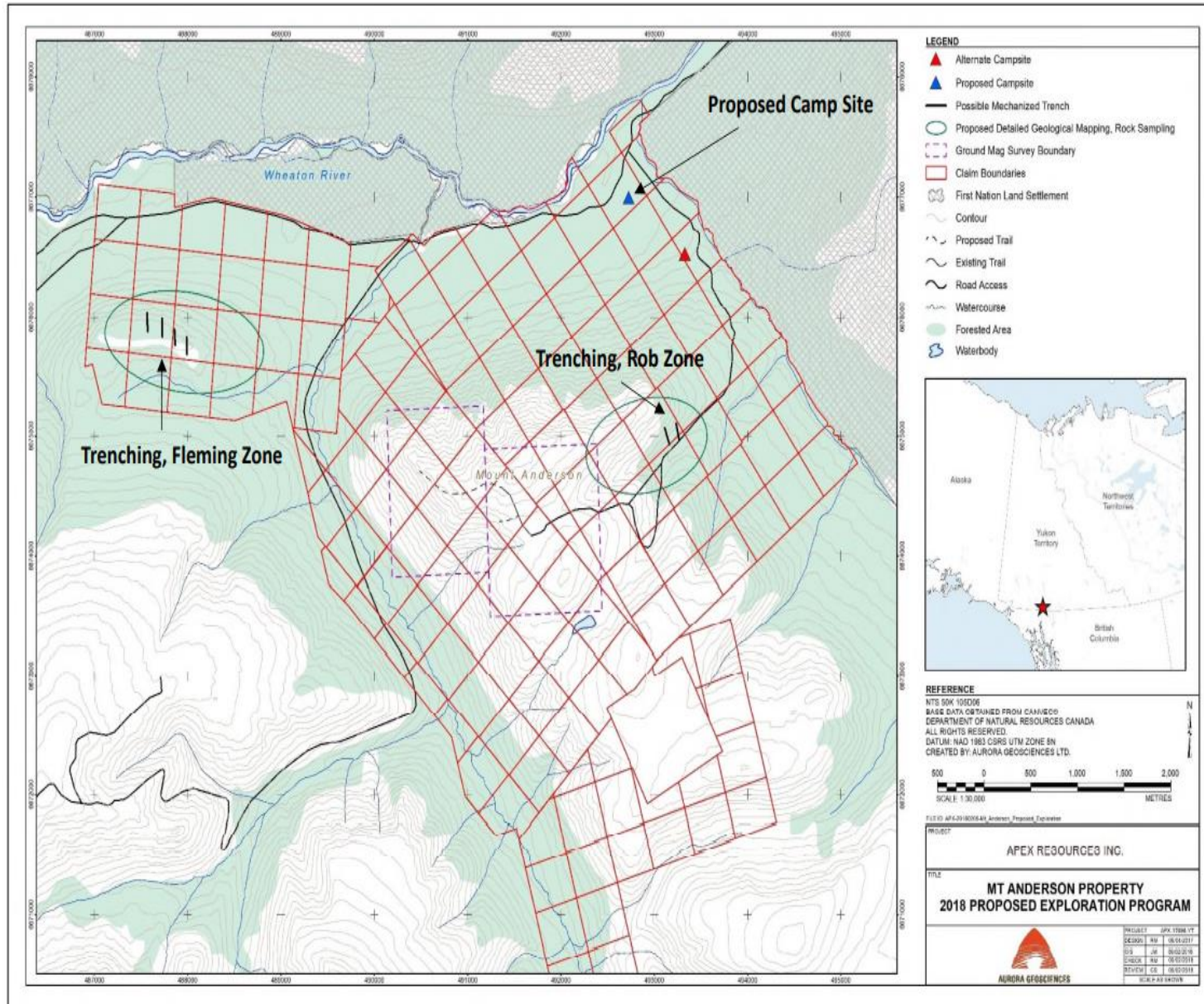
Actual amount of drilling will depend on earlier results and continued funding



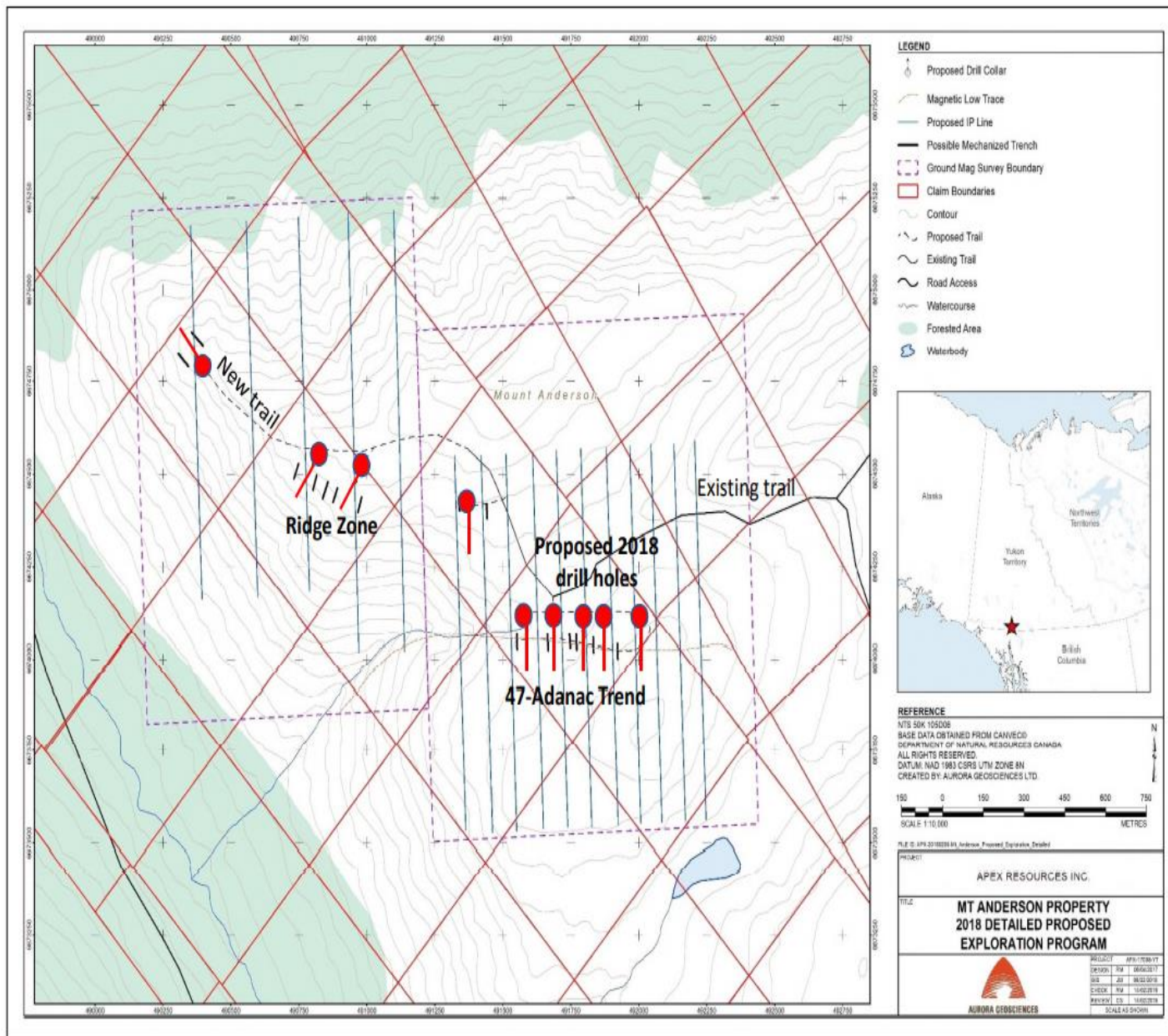
Adanac Zone,
looking west



Proposed Exploration for 2018



Detail, Proposed Exploration for 2018



Other Issues

- **Lambing Season:** Will avoid annual exploration prior to June 15th
- **Raptors:** Will avoid raptor sites if discovered, and stay 1 km away from eagle and falcon nets. Helicopters to fly at high altitudes when possible
- **Wildlife:** Will monitor wildlife when seen, and attempt to minimize potential for encounters. Bear fence surrounding camp will be installed
- **Seasonal Exploration:** Annual exploration seasons to be completed by September 15th to avoid conflict with caribou breeding season
- **Drill sites, access trails:** To be re-contoured when complete; all garbage, drums, etc. to be removed
- **Water pollution:** Fairly minimal camp water usage. Drill “return” water to be placed into “double sumps” to allow solids to settle



Other Issues

- **Lambing Season:** Will avoid annual exploration prior to June 15th
- **Raptors:** Will avoid raptor sites if discovered, and stay 1 km away from eagle and falcon nets. Helicopters to fly at high altitudes when possible
- **Wildlife:** Will monitor wildlife when seen, and attempt to minimize potential for encounters. Bear fence surrounding camp will be installed
- **Seasonal Exploration:** Annual exploration seasons to be completed by September 15th to avoid conflict with caribou breeding season
- **Drill sites, access trails:** To be re-contoured when complete; all garbage, drums, etc. to be removed
- **Water pollution:** Fairly minimal camp water usage. Drill “return” water to be placed into “double sumps” to allow solids to settle



Thank You

Contact: Carl Schulze
Aurora Geosciences Ltd.
Tel: 867-668-7672, c. 867-333-0398
Carl.Schulze@aurorageosciences.com

